

坂本龍一 映画館音響監修

SAION

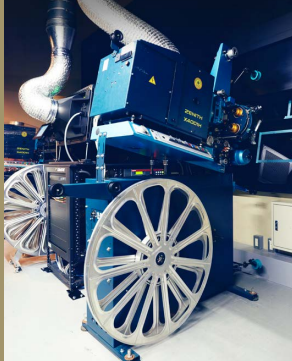
SR EDITION

The sound system of this theater has been consulted by Ryuichi Sakamoto

ScreenX Three-sided wide view theater



FILM PROJECTOR 35mm film projector



ART Works of art by up-and-coming artists



The One and Only 109CINEMAS PREMIUM Experience

For those who know the true nature of things;
come and open your senses.
An unprecedented experience awaits you.

GUIDE MAP

SAION in all theaters
SR EDITION



TICKETS

Regular Price	CLASS A	CLASS S
General	4,500 yen	6,500 yen
Cinema Point memberships	4,000 yen	6,000 yen
ScreenX Additional Fee	+700 yen	+700 yen

* The ticket price includes other service charges such as a Welcome Concession.
* Ticket price may vary depending on the show.

ACCESS

- 1-minute walk from Seibu Shinjuku Line "Seibu-Shinjuku Station"
- 6-minute walk from Toei Ōedo Line "Shinjuku-nishiguchi Station"
- 7-minute walk from JR, Odakyu, Keio, and Tokyo Metro Marunouchi Lines "Shinjuku Station"
- 8-minute walk from Tokyo Metro Marunouchi Line / Fukutoshin Line and Toei Shinjuku Line "Shinjuku-sanjome Station"

TOKYU KABUKICHO TOWER 9F-10F,
1-29-1 Kabukicho,
Shinjuku-ku, Tokyo

✕ @109_PREMIUM_SJ
📷 @109cinemas_premium
109cinemas.net/premiumshinjuku/



109CINEMAS PREMIUM

The special experience begins 60 minutes before the movie.

Seven steps to ensure you thoroughly enjoy yourself.

The cinema offers a special experience unlike anywhere else.

* Customers attending first screenings may not be admitted one hour prior depending on the opening time.

STEP 1 RECEPTION

The gateway to a moving cinematic experience

Please scan your ticket QR code to the gate on right side of the reception.



STEP 4 LOUNGE

Carefully selected furniture and music

A space enveloped by the "music" composed by musician Ryuichi Sakamoto. Spend a peaceful time away from the hustle and bustle of the city.



STEP 2 WELCOME CONCESSION

Freely enjoy food & drinks

* Included in your ticket.

You can enjoy the special popcorn and soft drinks as much as you want until the movie starts.



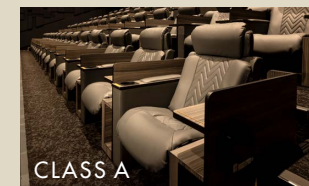
STEP 5 THEATERS

A sophisticated space that invites you to an immersive experience

All seats are premium seats, and the sound system of the theater has been consulted by Ryuichi Sakamoto. The cinema also features "Screen X," "Dolby Atmos" and 35mm film projector.



CLASS S



CLASS A

Features seats designed for a sense of privacy where you can enjoy yourself undisturbed. Seats are equipped with an electric reclining function.

Features seats designed for comfort. Seats are equipped with a reclining function and side table.

STEP 3 THE BAR

Foods and cocktails make your experience more special

You can enjoy great foods, desserts, and original cocktails that made with selected ingredients.

* Cashless payment only

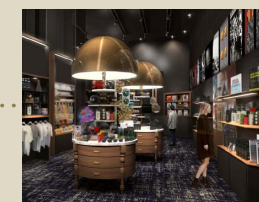
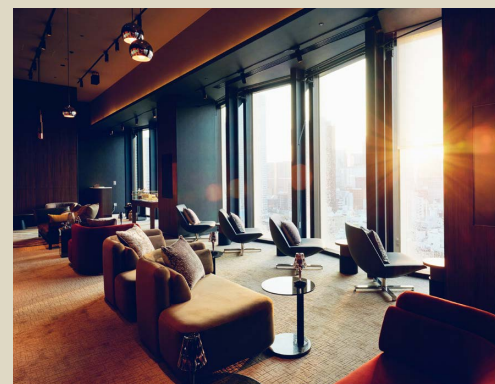


The premium experience continues after the movie.

STEP 6 OVERTURE Premium Lounge

Premium Lounge service for CLASS S ticket holders

You will be served a complimentary welcome drink and spend a special time while talking about the movie you have seen.



Gift tickets for the "CLASS S" experience are also available.

STEP 7 POST CREDIT Souvenir Shop

Bring the memory of the movie back to your home

The shop offers not only official movie goods, but also collaborative products and souvenirs from Kabukicho, Shinjuku.